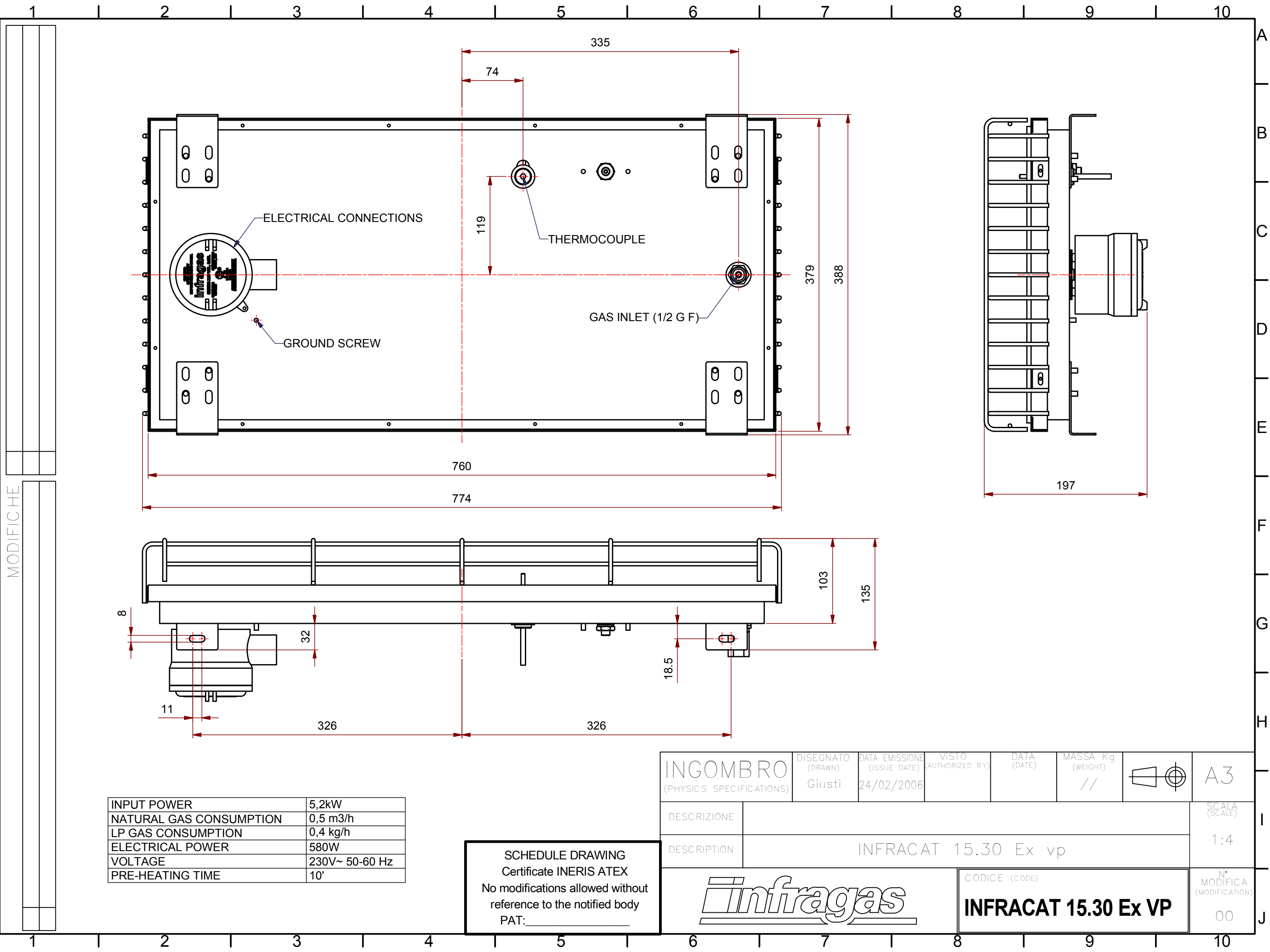


Per quote senza tolleranza vedere ISO 2768 - m  
For dimensions without tolerance indications see ISO 2768 - m

The drawing and informations here on  
are property of the **INFRAGAS S.p.A.**  
Copying is forbidden without written consent of the Company

Il disegno e le informazioni relative sono  
proprietà della **INFRAGAS S.p.A.**  
Divieto di riproduzione a terzi senza autorizzazione scritta.



INPUT POWER	5,2kW
NATURAL GAS CONSUMPTION	0,5 m3/h
LP GAS CONSUMPTION	0,4 kg/h
ELECTRICAL POWER	580W
VOLTAGE	230V~ 50-60 Hz
PRE-HEATING TIME	10'

**SCHEDULE DRAWING**  
Certificate INERIS ATEX  
No modifications allowed without  
reference to the notified body  
PAT: \_\_\_\_\_

<b>INGOMBRO</b> (PHYSICS SPECIFICATIONS)		DISEGNATO (DRAWN) Giusti	DATA EMISSIONE (ISSUE DATE) 24/02/2006	VISTO (AUTHORIZED BY)	DATA (DATE)	MASSA Kg (WEIGHT) //		A3
DESCRIZIONE	INFRACAT 15.30 Ex vp							SCALA (SCALE) 1:4
DESCRIPTION								N° MODIFICA (MODIFICATION) 00
CODICE (CODE)							<b>INFRACAT 15.30 Ex VP</b>	